
**OHAKPU COMMUNITY
PRIMARY SCHOOL,
ORU WEST,
IMO STATE, NIGERIA.**



CHARIS LEARNING FOUNDATION

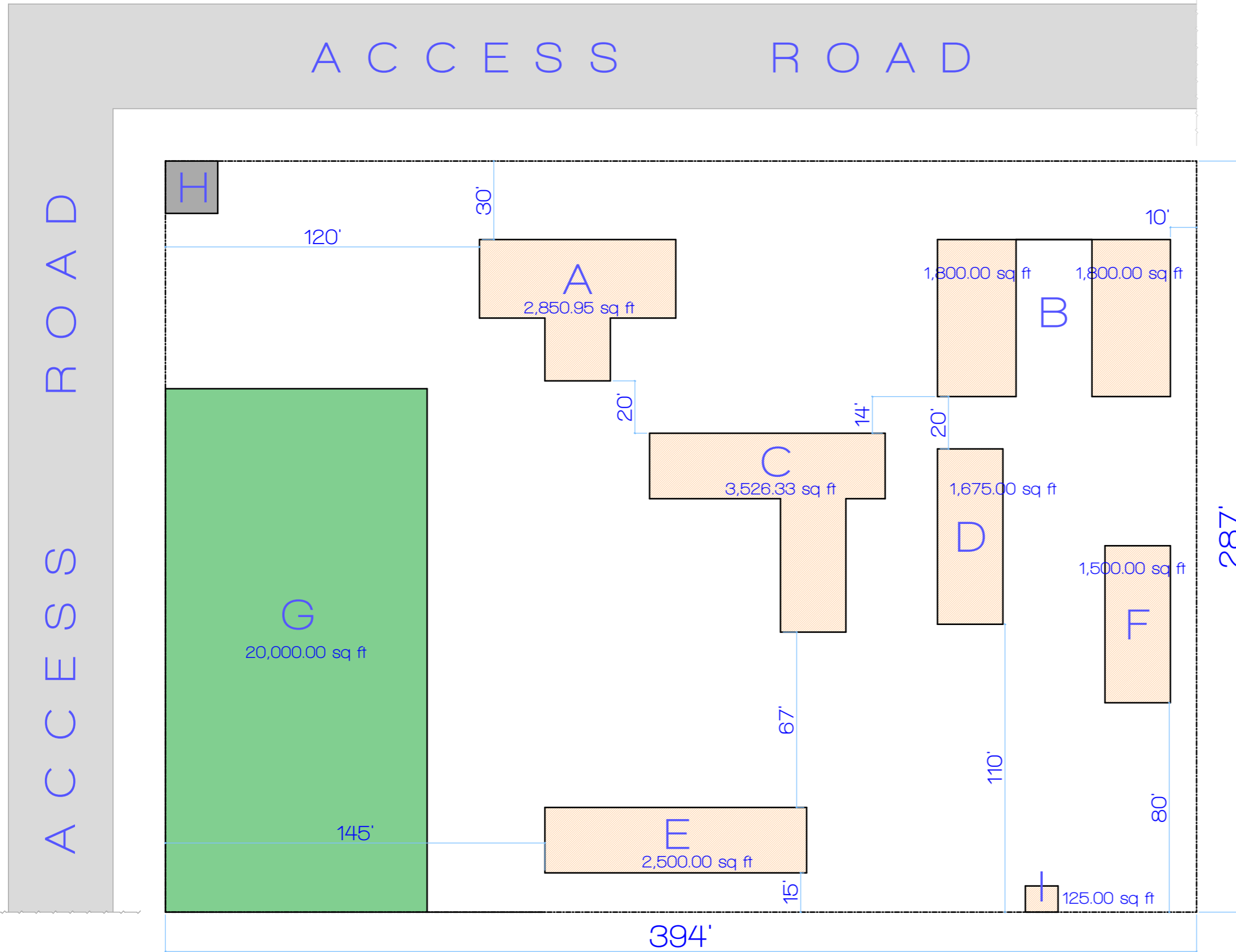
+234 816 978 4152; +234 817 962 8965

impactlearningfoundation21@gmail.com

SIGNPOST



SITE LAYOUT



LEGEND

- A = FEDERAL GOVERNMENT/UBEC PROJECT
- B = ROCHAS SCHOOL PROJECT
- C = OLD SCHOOL BUILDING/CLASSROOM
- D = HEADMASTER'S OFFICE
- E = CLASSROOM
- F = CLASSROOM
- G = PLAYGROUND
- H = HIGH TENSION
- I = TOILET

scale 1:500

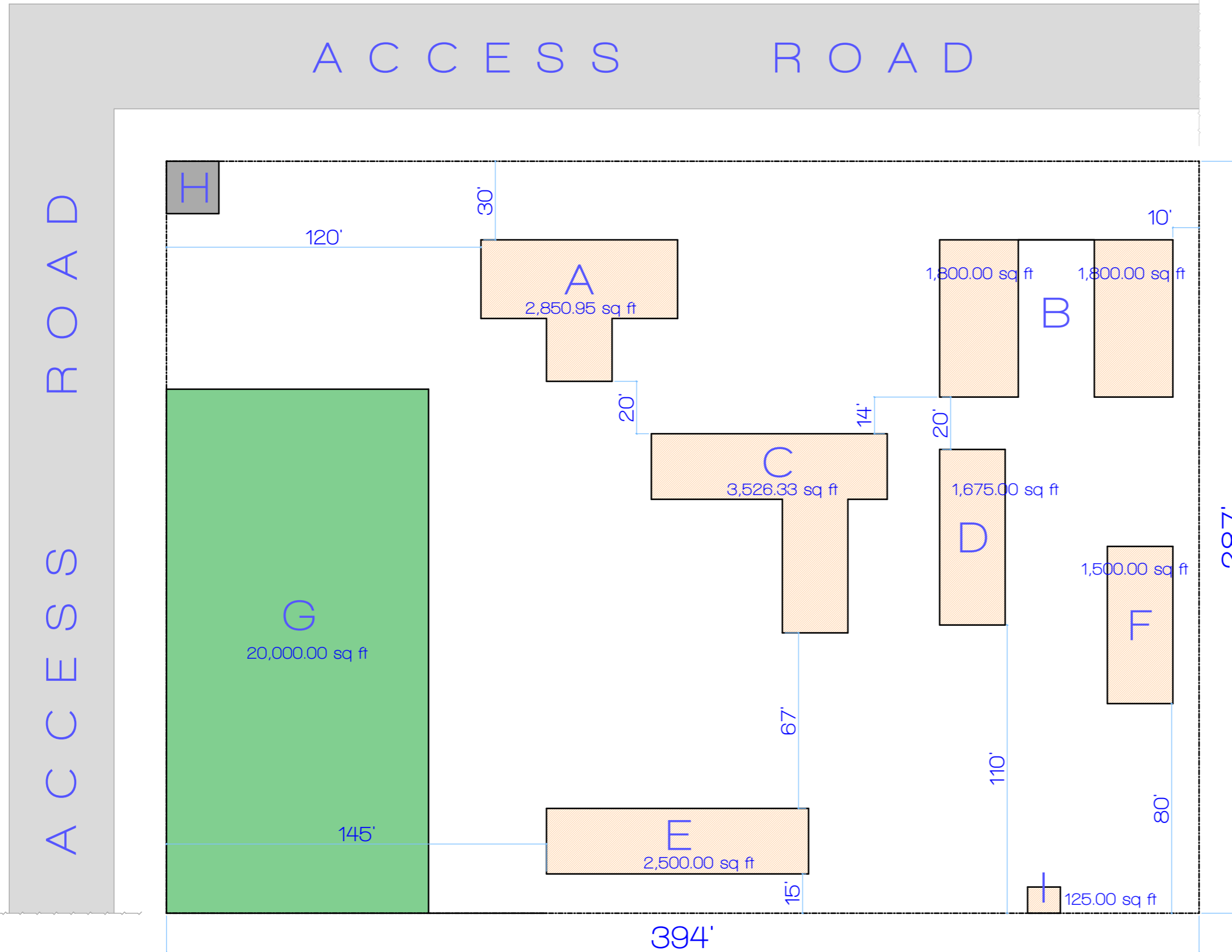


CHARIS LEARNING FOUNDATION

+234 816 978 4152; +234 817 962 8965

impactlearningfoundation21@gmail.com

SITE ANALYSIS



AREA OF SITE:	113,078.00 sq ft
AREA BUILT:	15,979.28 sq ft
AREA UNBUILT:	97,098.72 sq ft
NO. OF BUILDINGS:	6
BLOCK A AREA:	2,850.95 sq ft
BLOCK B AREA:	3,600.00 sq ft
BLOCK C AREA:	3,526.33 sq ft
BLOCK D AREA:	1,875.00 sq ft
BLOCK E AREA:	2,500.00 sq ft
BLOCK F AREA:	1,500.00 sq ft
BLOCK I AREA:	125.00 sq ft
PLAYGROUND AREA:	20,000.00 sq ft



S I T E A N A L Y S I S

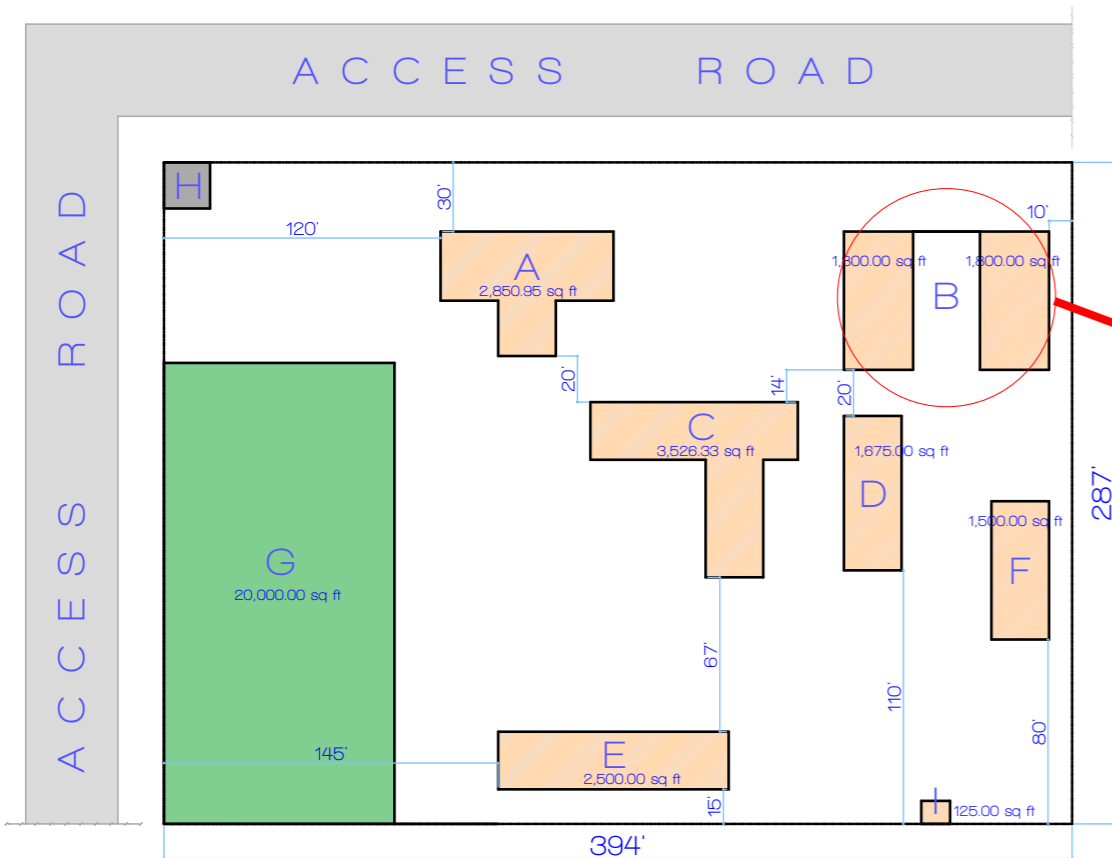
- Premises is unkempt; overgrown with bushes.
- Playground not properly maintained.
- No covered connecting walkways amongst buildings.
- No security. No perimeter fences. Site is porous on all its perimeters and thus susceptible to predators.
- Dilapidated Structures on site.
- No proper Landscape design
- No proper water system within the premises
- No clinic, sick bay, or first aid facility for the school



BLOCK B: ROCHAS' ADMINISTRATION'S

SCHOOL PROJECT

AREA: 3,600 SQ FT



BLOCK B: ROCHAS' ADMINISTRATION'S SCHOOL PROJECT



BLOCK B: ROCHAS' ADMINISTRATION'S SCHOOL PROJECT



BLOCK B: ROCHAS' ADMINISTRATION'S SCHOOL PROJECT

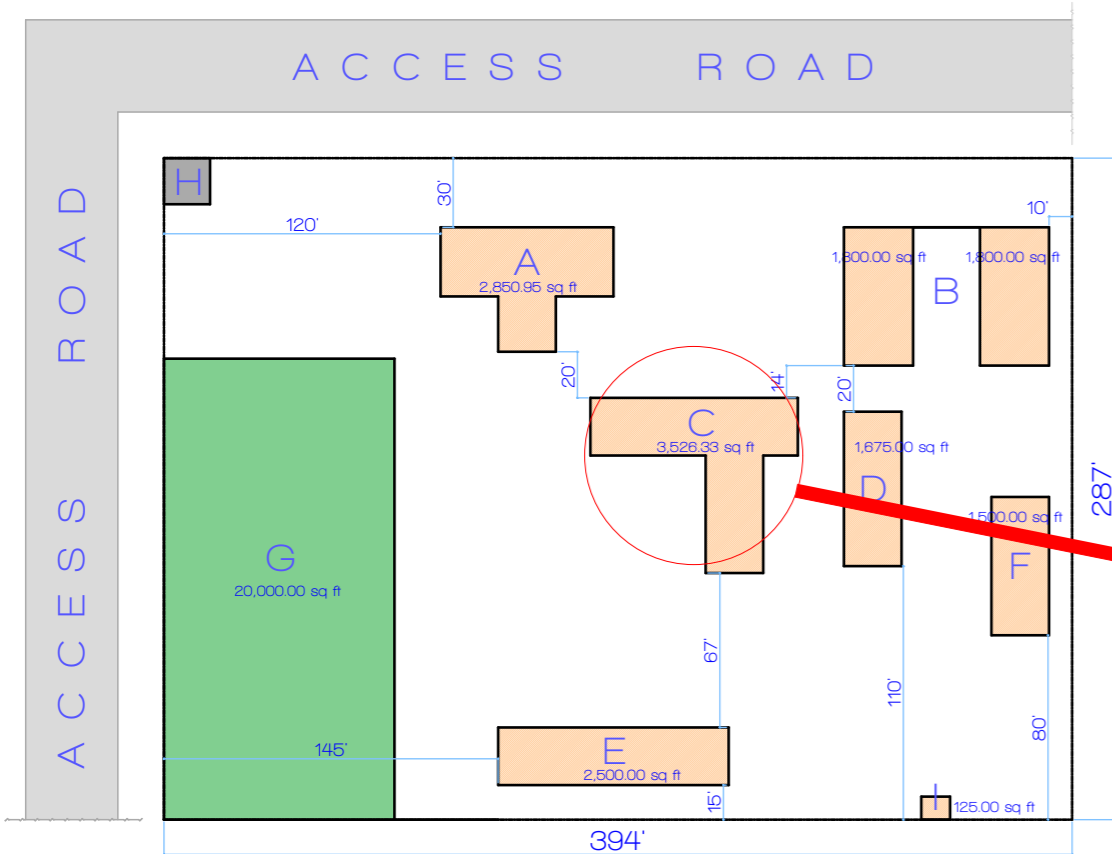
ENVIRONMENTAL ASSESSMENT	<ul style="list-style-type: none"> - Surrounding premises, very unkempt, with overgrown bushes. - Surrounding Premises, susceptible to flood.
STRUCTURAL ASSESSMENT	<ul style="list-style-type: none"> - Dilapidating. Roofing sheets and trusses torn out. - Guard Rails structural integrity are suspect. - The structure, a pre-fabricated structure do not appear and feel properly fabricated and fixed, going by the presence of wall cracks and quivering nature of the structure.

FACILITIES ASSESSMENT	<ul style="list-style-type: none"> - Facility not safe for use.
SAFETY ASSESSMENT	<ul style="list-style-type: none"> - Block not adequately burglary-proof - Block not adequately protected from unfavourable weather conditions - Block not structurally sound for use.

BLOCK C: OLD SCHOOL

BUILDING/CLASSROOM

AREA: 3,526.33 SQ FT



BLOCK C: OLD SCHOOL BUILDING/CLASSROOM



BLOCK C: OLD SCHOOL BUILDING/CLASSROOM



BLOCK C: OLD SCHOOL BUILDING / CLASSROOM



BLOCK C: OLD SCHOOL BUILDING/CLASSROOM



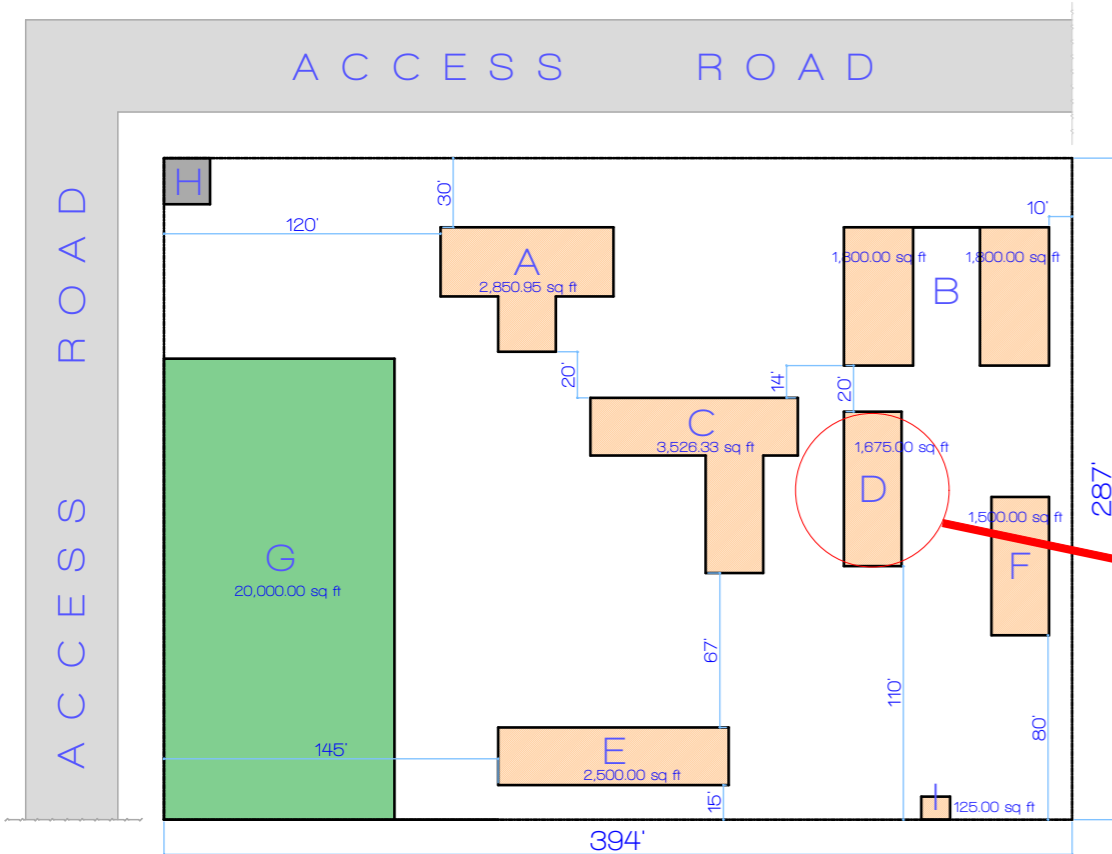
BLOCK C: OLD SCHOOL BUILDING / CLASSROOM

ENVIRONMENTAL ASSESSMENT	
	<ul style="list-style-type: none"> - Surrounding premises, very unkempt, with overgrown bushes. - Surrounding Premises, susceptible to flood.
STRUCTURAL ASSESSMENT	
	<ul style="list-style-type: none"> - Dilapidating. Expired roofing sheets and trusses. Broken Floors. Cracked Walls. - Broken and Open Windows - No Doors - Structural Integrity very suspect.
FACILITIES ASSESSMENT	
	<ul style="list-style-type: none"> - Facilities grossly inadequate. Barely even present.

SAFETY ASSESSMENT	
	<ul style="list-style-type: none"> - Classrooms not adequately burglarproof - Block not adequately protected from unfavourable weather conditions. - Structural Integrity very suspect.

BLOCK D: HEADMASTER'S OFFICE

AREA: 1,650.00 SQ FT



BLOCK D: HEADMASTER'S OFFICE



BLOCK D: HEADMASTER'S OFFICE



BLOCK D: HEADMASTER'S OFFICE



CHARIS LEARNING FOUNDATION

+234 816 978 4152; +234 817 962 8965

impactlearningfoundation21@gmail.com

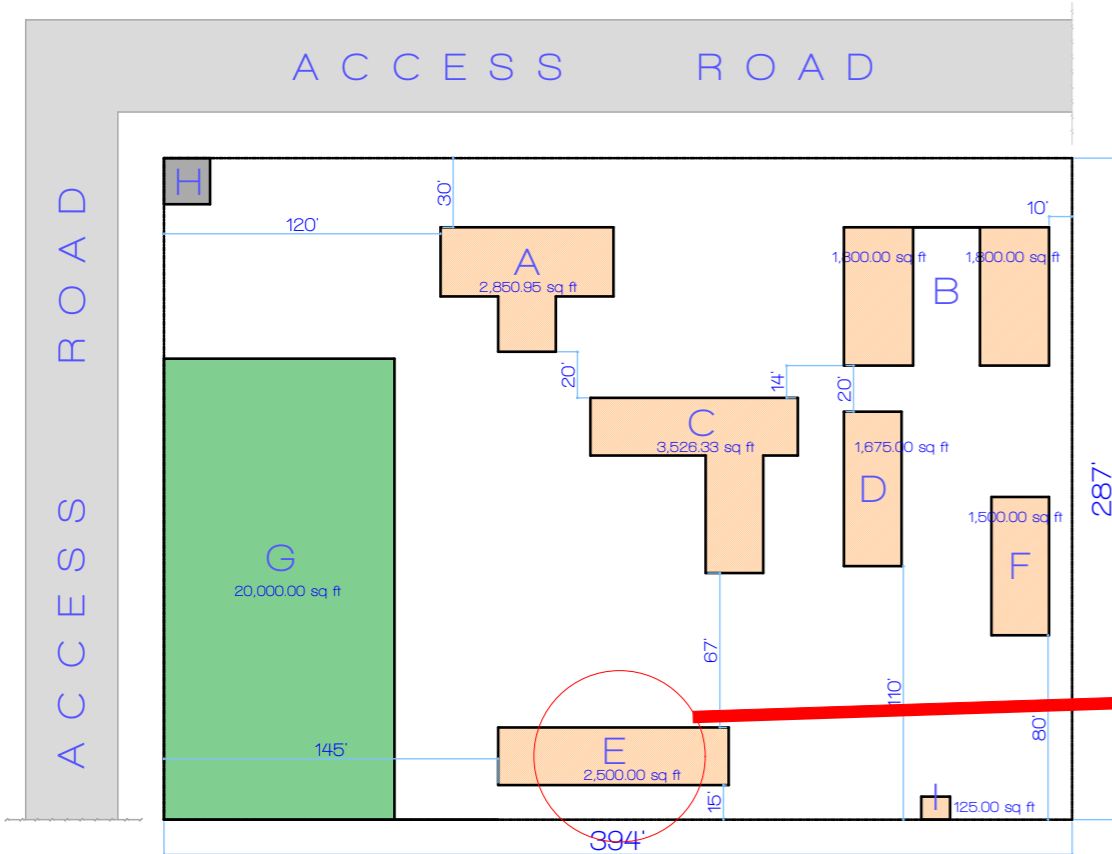
B L O C K D : H E A D M A S T E R ' S O F F I C E

ENVIRONMENTAL ASSESSMENT	
	<ul style="list-style-type: none"> - Surrounding premises, very unkempt, with overgrown bushes. - Surrounding Premises, susceptible to flood.
STRUCTURAL ASSESSMENT	
	<ul style="list-style-type: none"> - Dilapidating. Expired roofing sheets and trusses. Broken Floors. Cracked Walls. - Worn out doors and windows - Requires urgent maintenance
FACILITIES ASSESSMENT	
	<ul style="list-style-type: none"> - Facilities grossly inadequate. Barely even present.

SAFETY ASSESSMENT	
	<ul style="list-style-type: none"> - Block not adequately burglarproof - Block not adequately protected from unfavourable weather conditions. - Structural Integrity suspect. -

BLOCK E: CLASSROOM

AREA: 2,500.00 SQ FT



BLOCK E: CLASSROOM



BLOCK E: CLASSROOM



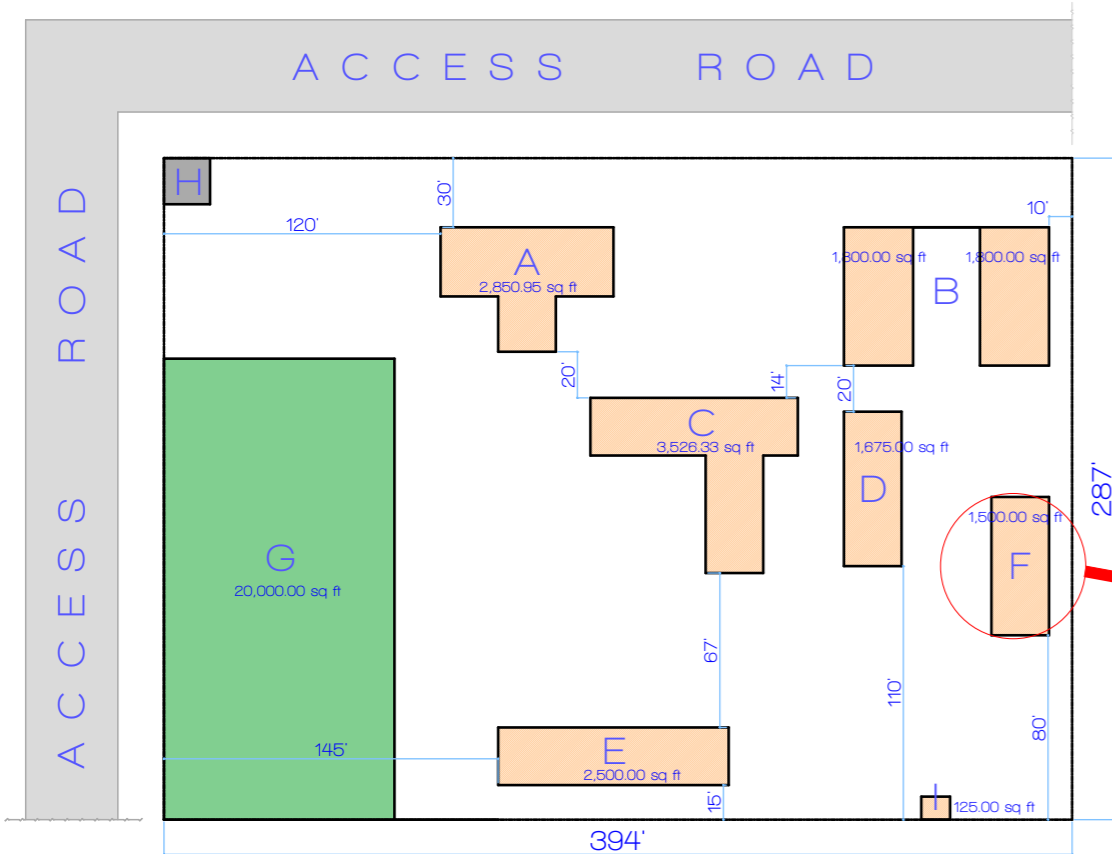
B L O C K E : C L A S S R O O M

ENVIRONMENTAL ASSESSMENT	
	<ul style="list-style-type: none"> - Surrounding premises, very unkempt, with overgrown bushes. - Surrounding Premises, susceptible to flood.
STRUCTURAL ASSESSMENT	
	<ul style="list-style-type: none"> - Expired roofing sheets and trusses. - Requires maintenance and refurbishment.
FACILITIES ASSESSMENT	
	<ul style="list-style-type: none"> - Facilities grossly inadequate. Barely even present.

SAFETY ASSESSMENT	
	<ul style="list-style-type: none"> - Environment susceptible to environmental predators, such as snakes.

BLOCK F: CLASSROOM

AREA: 1,500.00 SQ FT



BLOCK F: CLASSROOM



B L O C K F : C L A S S R O O M



BLOCK F: CLASSROOM



BLOCK F: CLASSROOM



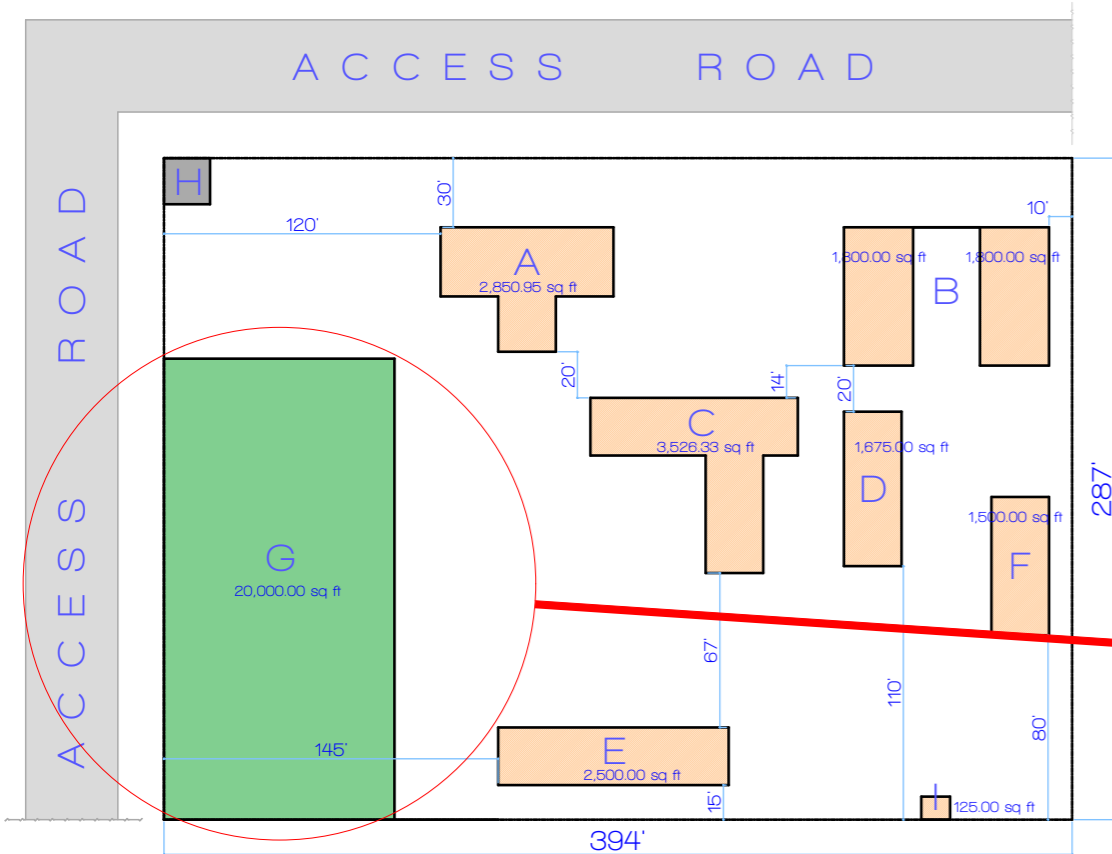
B L O C K F : C L A S S R O O M

ENVIRONMENTAL ASSESSMENT	
	<ul style="list-style-type: none"> - Surrounding premises, very unkempt, with overgrown bushes. - Surrounding Premises, susceptible to flood.
STRUCTURAL ASSESSMENT	
	<ul style="list-style-type: none"> - Dilapidating. Expired roofing sheets and trusses. Broken Floors. Cracked Walls. - Expired doors and windows - Requires urgent maintenance
FACILITIES ASSESSMENT	
	<ul style="list-style-type: none"> - Facilities grossly inadequate. Barely even present.

SAFETY ASSESSMENT	
	<ul style="list-style-type: none"> - Block not adequately burglarproof - Block not adequately protected from unfavourable weather conditions. - Structural Integrity suspect.

BLOCK G: PLAYGROUND

AREA: 20,000.00 SQ FT



B L O C K G : P L A Y G R O U N D



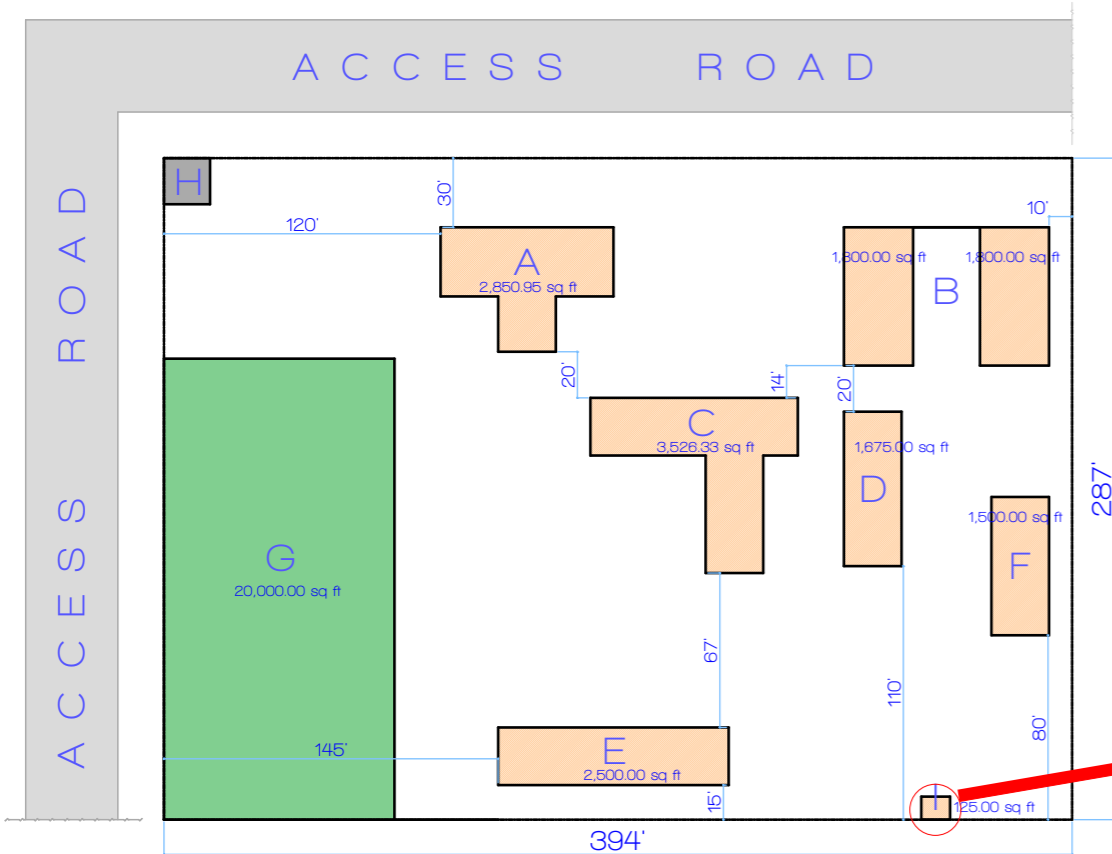
B L O C K G : P L A Y G R O U N D

ENVIRONMENTAL ASSESSMENT	
	<ul style="list-style-type: none"> - Very unkempt; overgrown. - Playground not properly defined or landscaped.
STRUCTURAL ASSESSMENT	
	<ul style="list-style-type: none"> - Requires sustained maintenance.
FACILITIES ASSESSMENT	
	<ul style="list-style-type: none"> - No playground facilities.

SAFETY ASSESSMENT	
	<ul style="list-style-type: none"> - Unkempt playground, not conducive for games.

BLOCK I: TOILET

AREA: 125.00 SQ FT



BLOCK I: TOILET



BLOCK I: TOILET



B L O C K I : T O I L E T

ENVIRONMENTAL ASSESSMENT	
	<ul style="list-style-type: none"> - Very unkempt; overgrown. - Susceptible to environmental predators
STRUCTURAL ASSESSMENT	
	<ul style="list-style-type: none"> - Grossly Substandard - Requires a properly designed-to-standard structure
FACILITIES ASSESSMENT	
	<ul style="list-style-type: none"> - Grossly inadequate, outdated, and in very poor conditions. - Pipe borne water from community borehole does not run into facility. - Poorly designed Pit latrine system in use.

SAFETY ASSESSMENT	
	<ul style="list-style-type: none"> - Environment susceptible to environmental predators such as snakes. - Pit latrine system in use with questionable decomposition means viz a viz pollution of ground water.